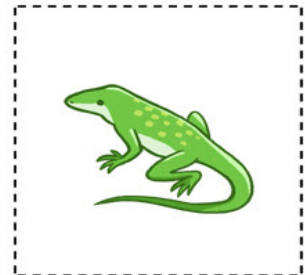
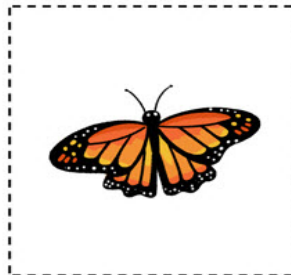
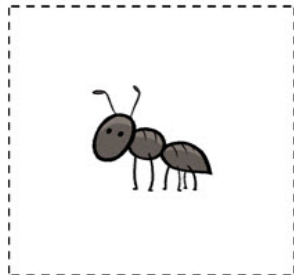
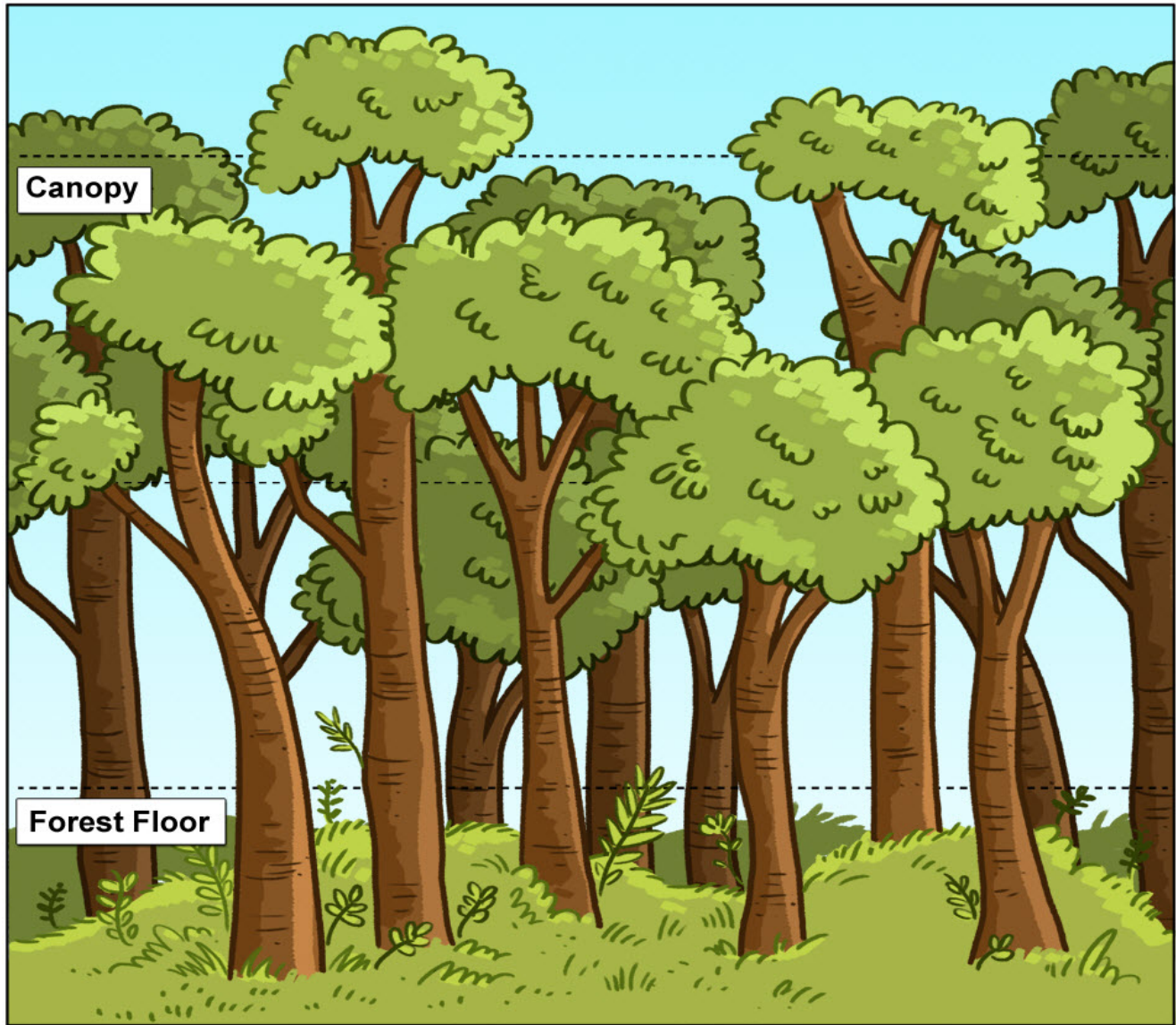


Rainforest Detective Notebook

This book belongs to:

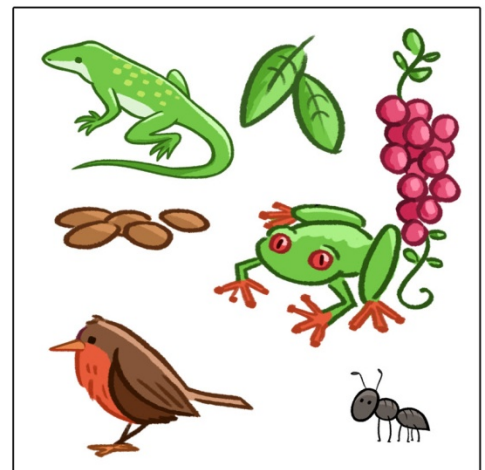
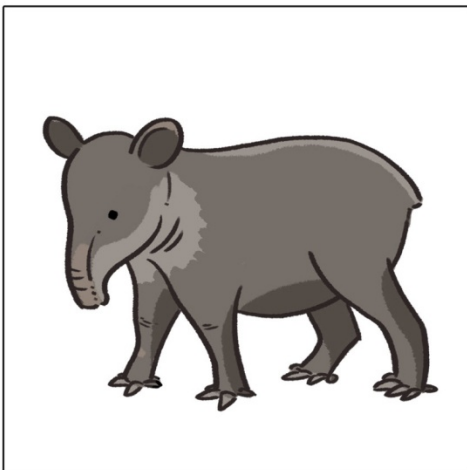
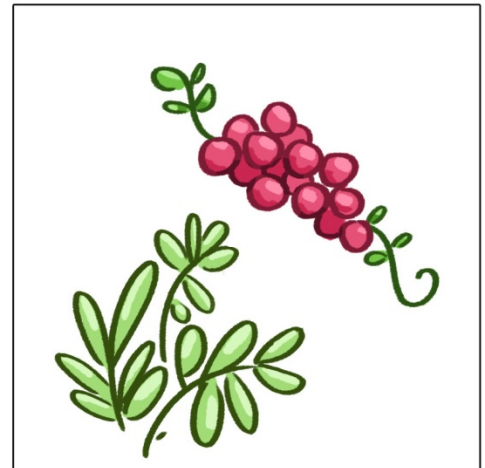
What Is a Rainforest?

The rainforest is a special place where many animals and plants live. Cut out each animal and paste it in the area where it lives.



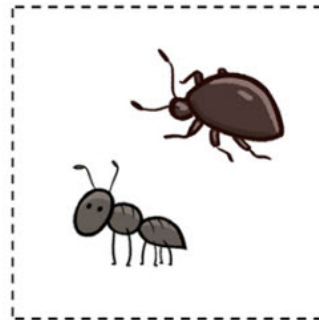
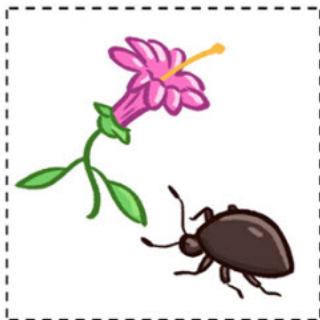
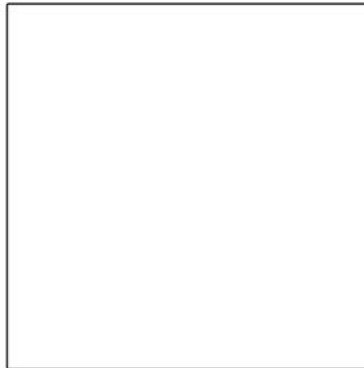
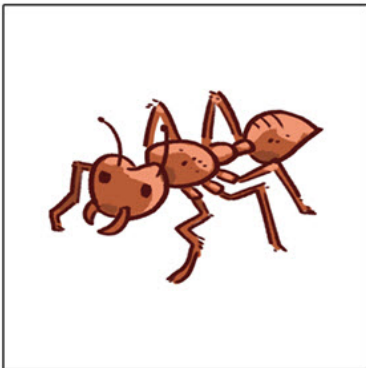
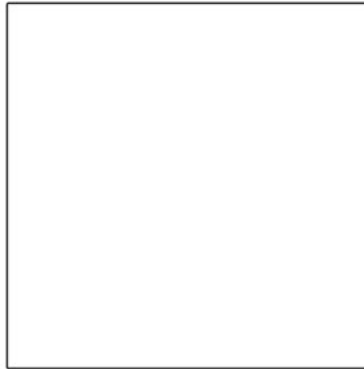
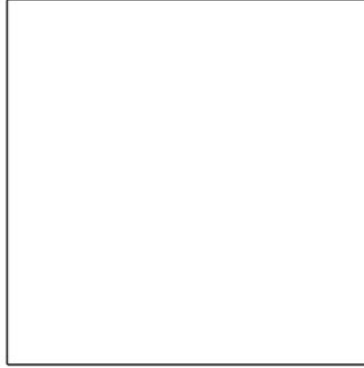
Food in the Rainforest

Here are some animals that live in the rainforest. Draw a line connecting each animal to the food it eats.









Food in the Rainforest

Cut and paste the food to match the animal that eats it.



Who Lives Here?

All animals need shelter from the weather and from danger. Here's how different animals find shelter in the rainforest.

	<p>Toucans live in the tree canopy. They take shelter in holes they find in trees. They sleep there at night, and they lay their eggs there, too. Sometimes many toucans share the same hole. Life in the trees can be pretty crowded for a toucan!</p>
	<p>Hummingbirds live in the treetops, too. They take shelter in areas that have lots of leaves. When it is time to raise baby hummingbirds, they build nests on branches that are protected from the sun, rain and other animals.</p>
	<p>Leafcutter ants live in big, underground nests that they dig into the forest floor. Ants lay their eggs in the nest so that baby ants can be protected as well.</p>
	<p>Tapirs live on land and in water, and they love to roll in the mud. When they are afraid, they take shelter in the water or in areas with lots of leaves.</p>
	<p>Capuchin monkeys live mainly in trees. They spend most of the day looking for food in the trees. The monkeys take shelter in leafy areas. At night, they sleep on tree branches.</p>
	<p>Red-eyed tree frogs start life as tadpoles living in water. When they become frogs, they move to the trees and live in the rainforest canopy. Red-eyed tree frogs take shelter by sleeping on the underside of leaves. Good thing they have sticky fingers and toes to help them hang on!</p>

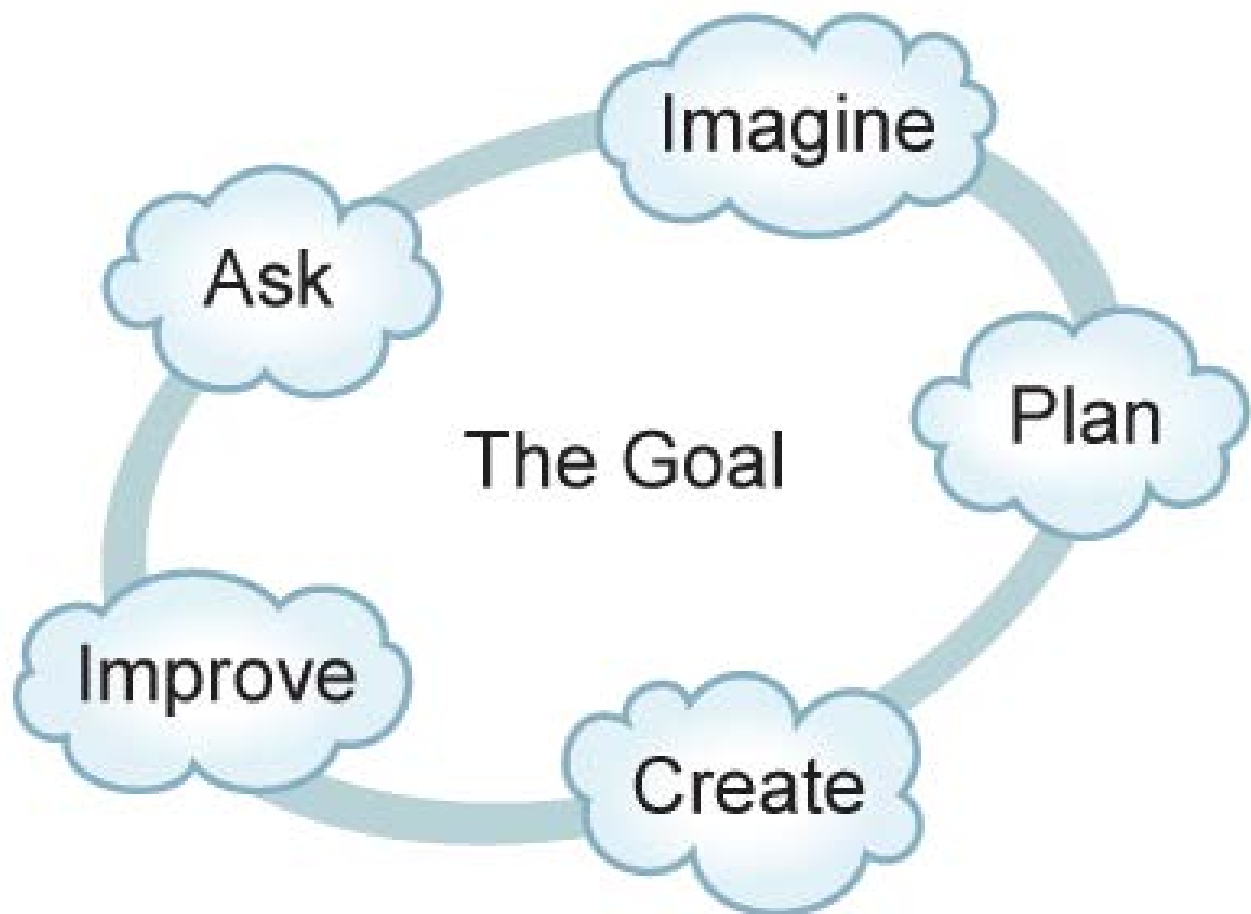
Water for Everyone

Where do animals find water in the rainforest? Circle the places where animals get water.



Engineering Design Process

Engineering Design Process



Plan a Rainforest Habitat

1. **The Goal:** Animals in the rainforest are losing their homes. Help by planning a rainforest habitat for a tapir, toucan, capuchin monkey, red-eyed tree frog, leafcutter ant or hummingbird.

First, choose an animal and draw it below. You may also color, cut and paste a picture of your animal below. See pages 11-16 for pictures to choose from.

Plan a Rainforest Habitat

2. **Imagine:** What does the animal need to live in its habitat? Look at the pictures on page 10. Cut out the things that you think your animal needs in its habitat. Paste them below.

Food

Water

Shelter

Plan a Rainforest Habitat

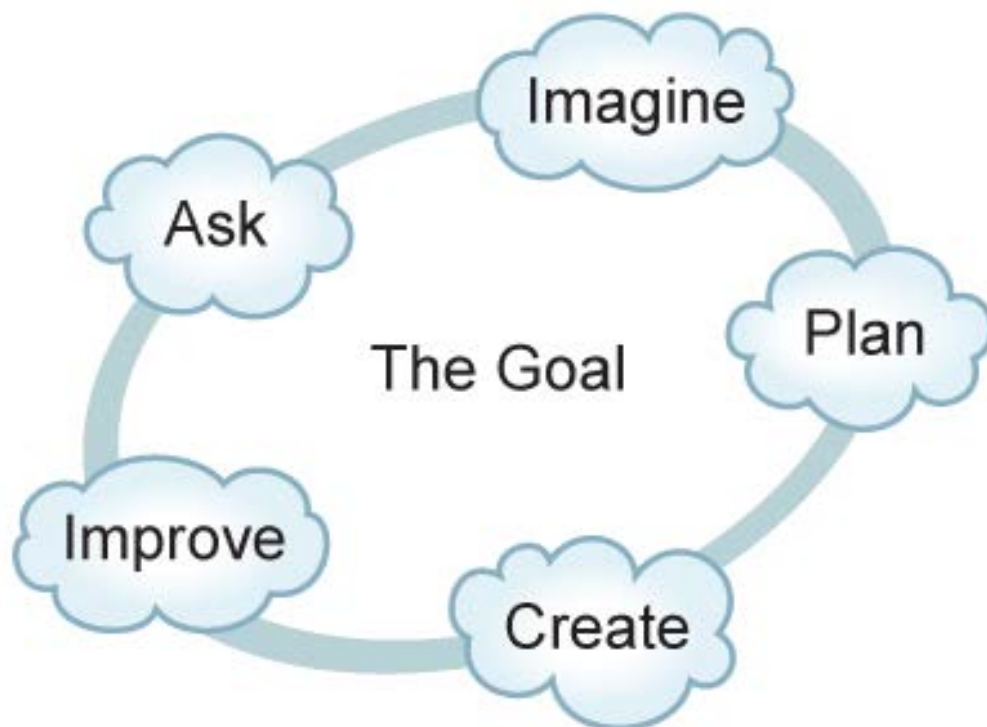
Continue working through the following steps of the engineering design process to complete the lesson.

4: **Create:** Use the Builder Tool to design a habitat for your animal.

5. Submit your habitat and see if it passes the Survival Test!

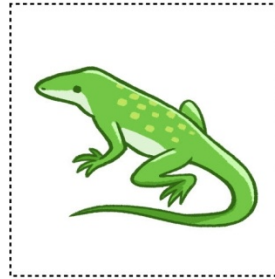
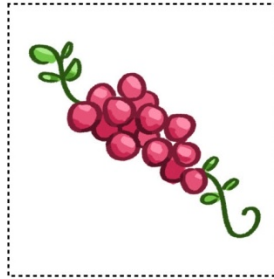
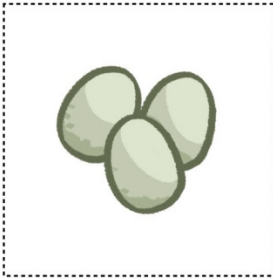
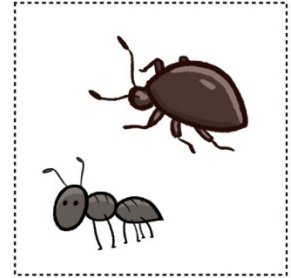
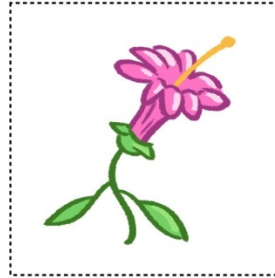
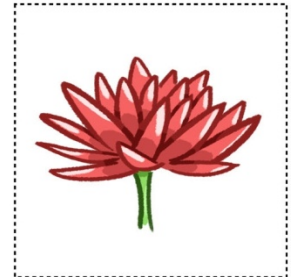
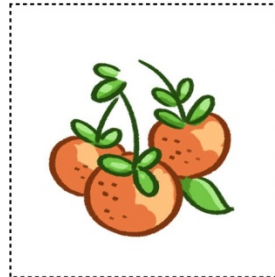
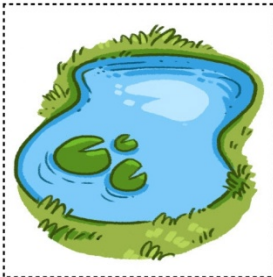
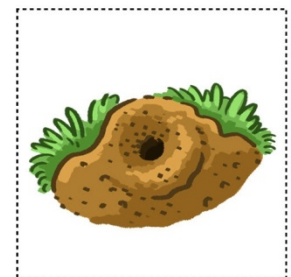
6. **Improve:** Think about what you can change in your habitat and try a new design.

7. **Ask:** Ask questions that you still have about the rainforest. Work with your class to complete the KWL chart and answer questions about what you learned.



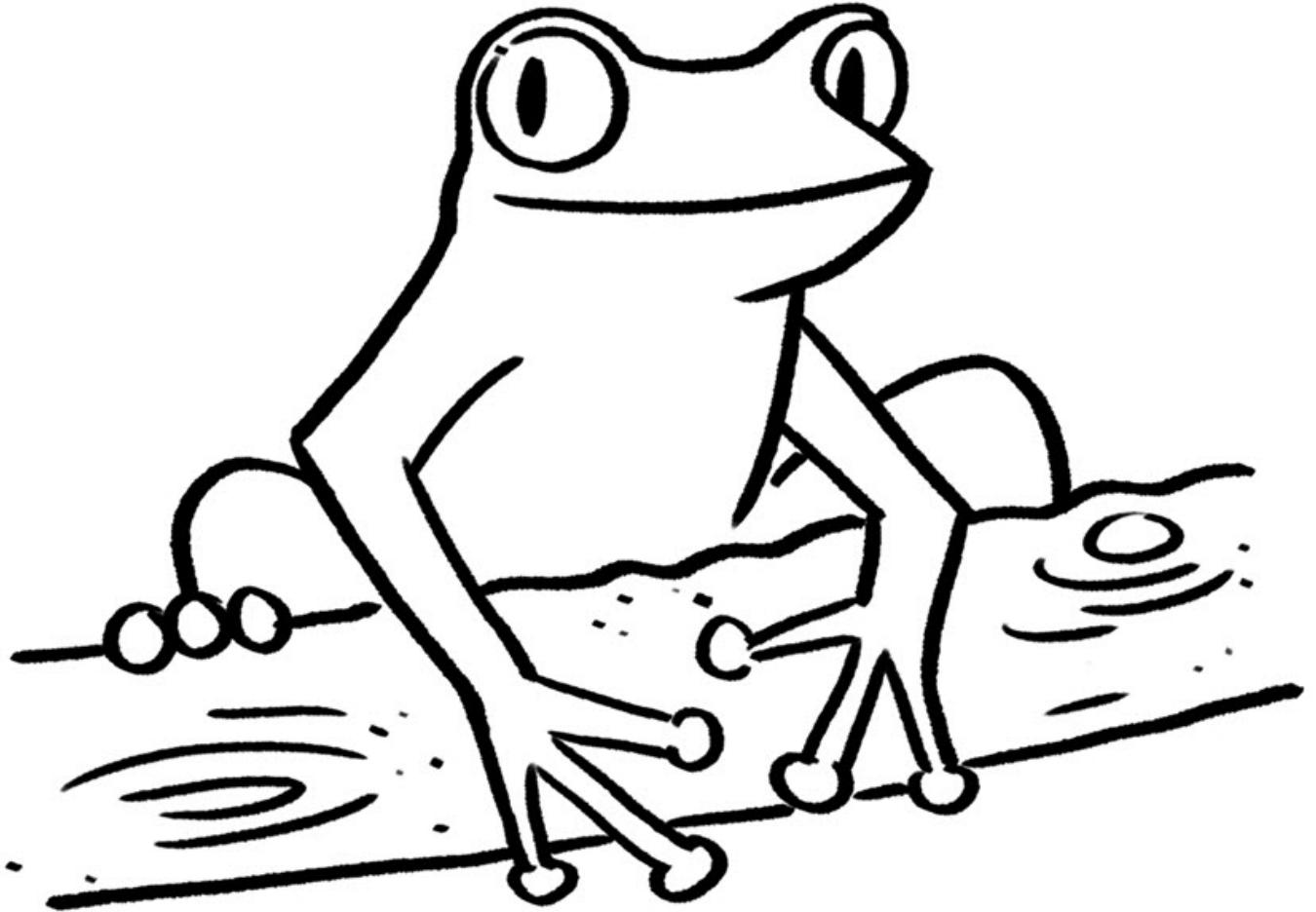
Plan a Rainforest Habitat

Cut out pictures that show what your animal needs to survive. Paste them on page 8.

Food**Water****Shelter**

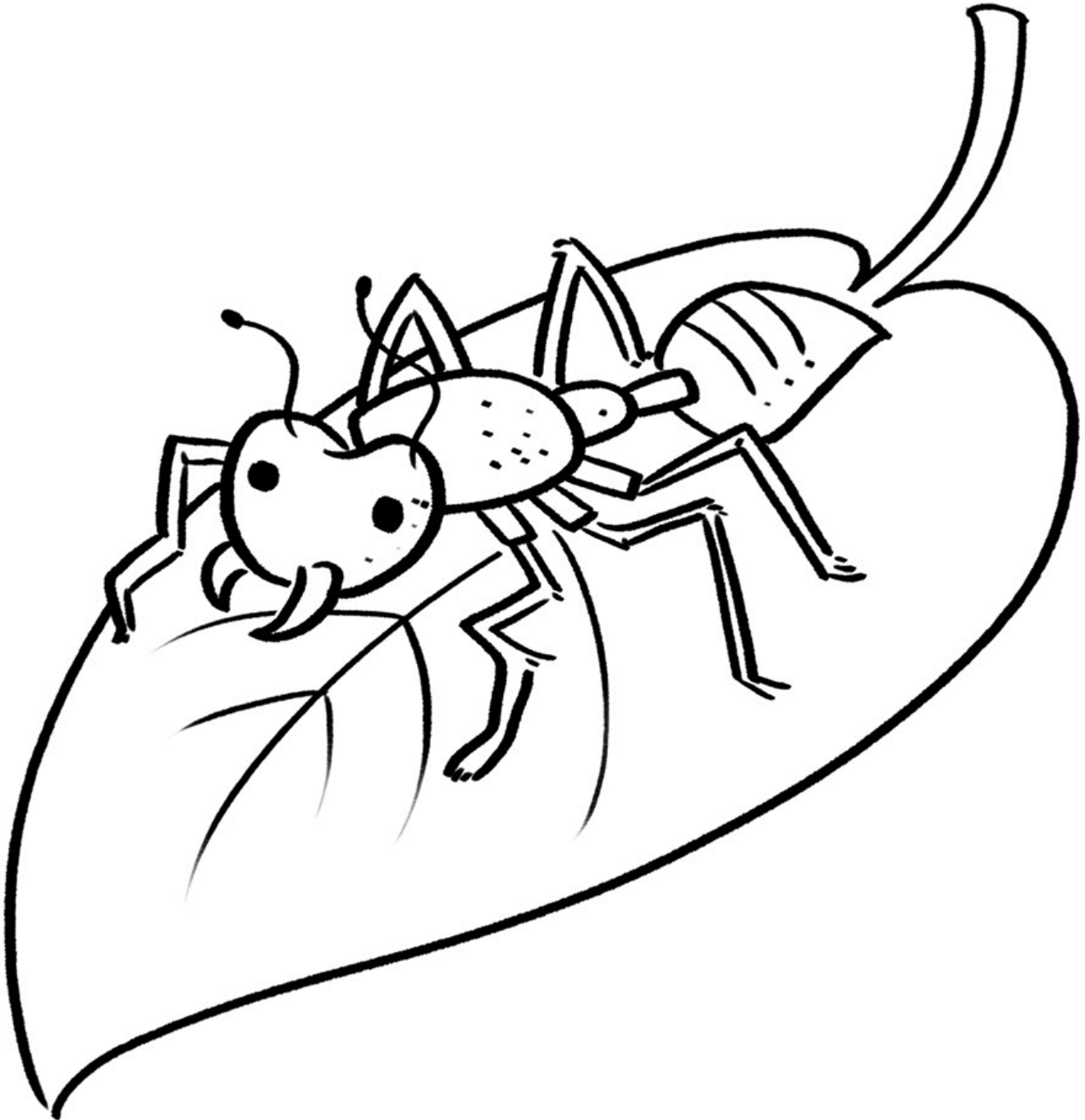
Rainforest Animals

Red-eyed Tree Frog



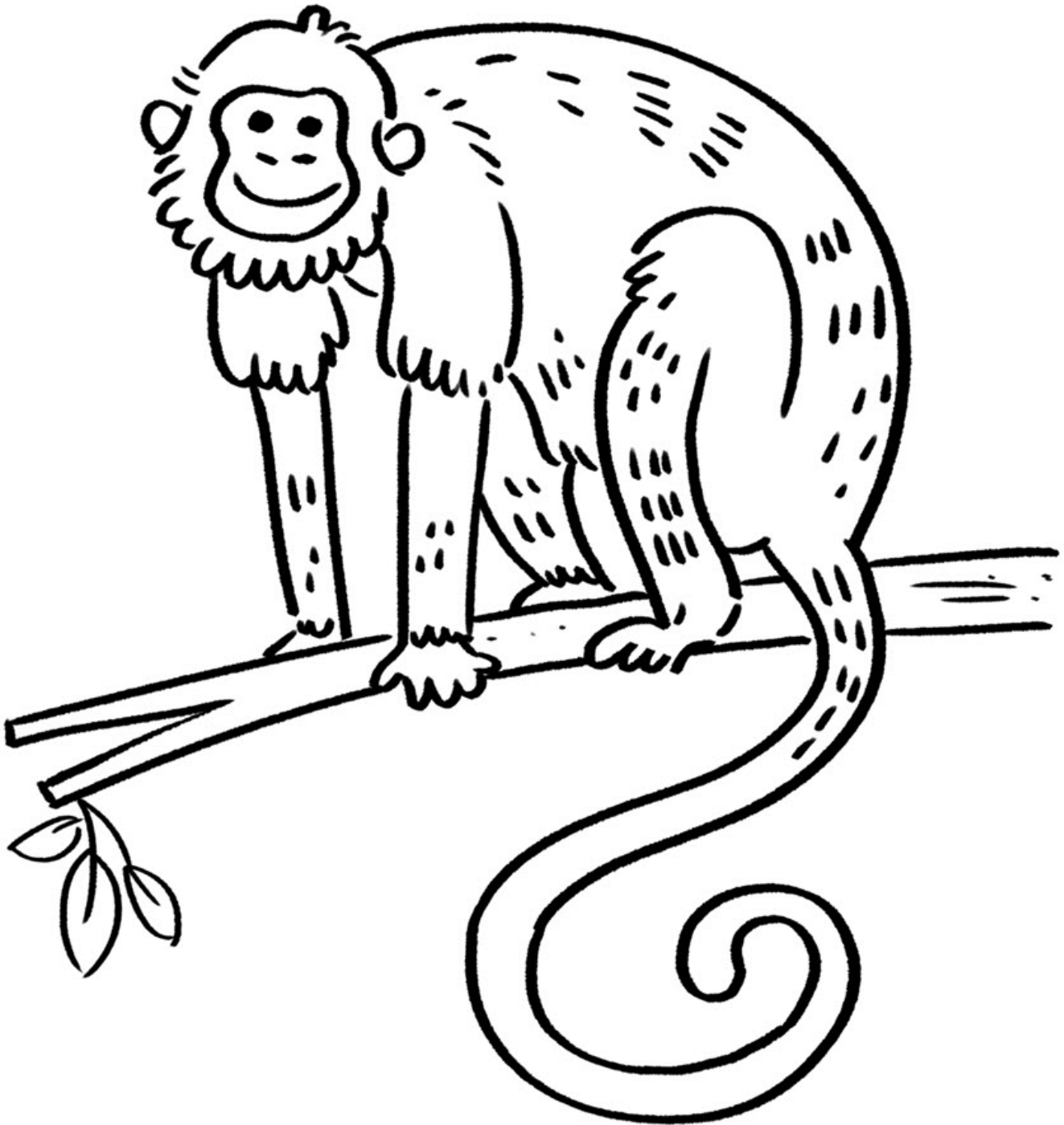
Rainforest Animals

Leafcutter Ant



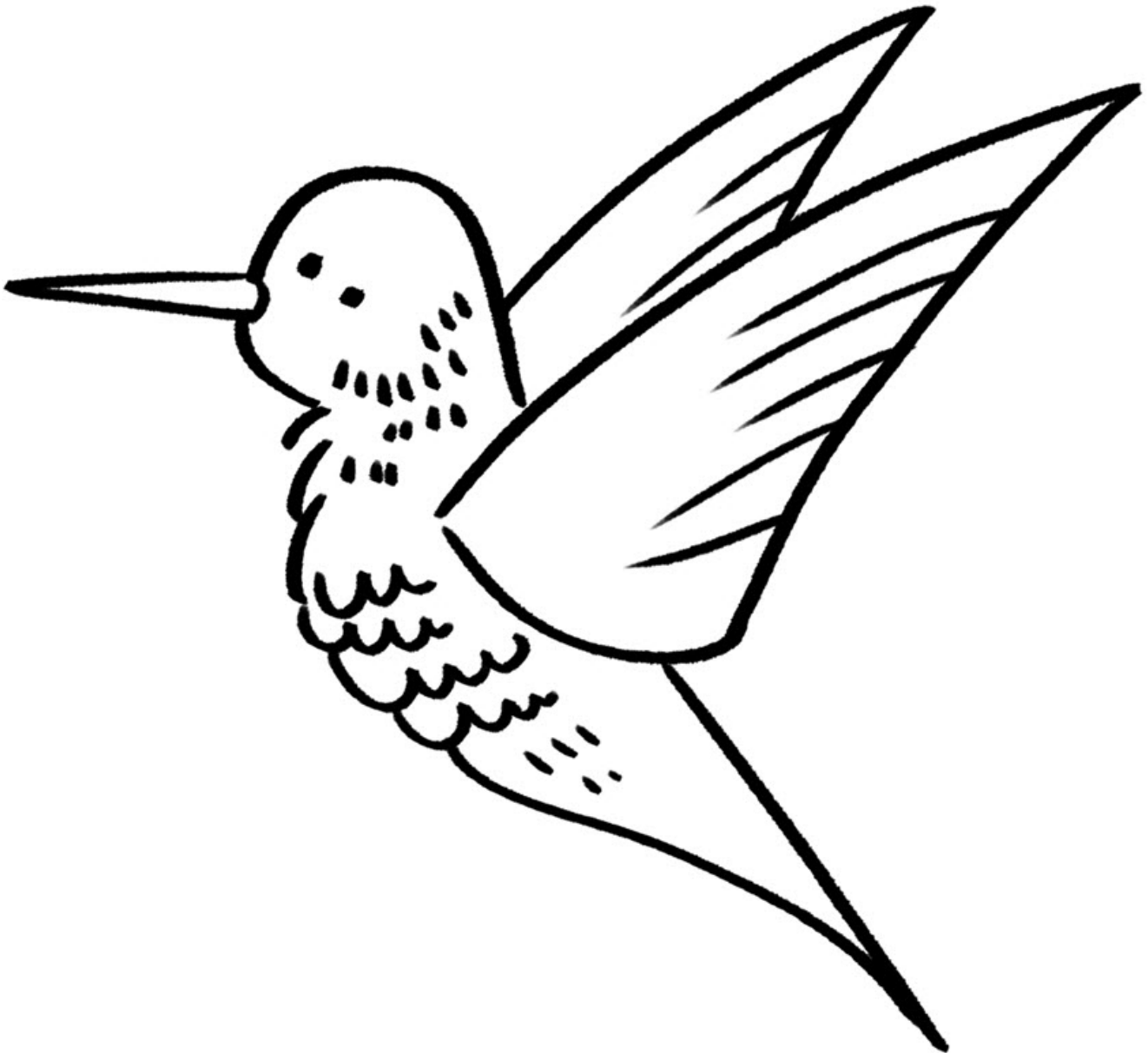
Rainforest Animals

Capuchin Monkey



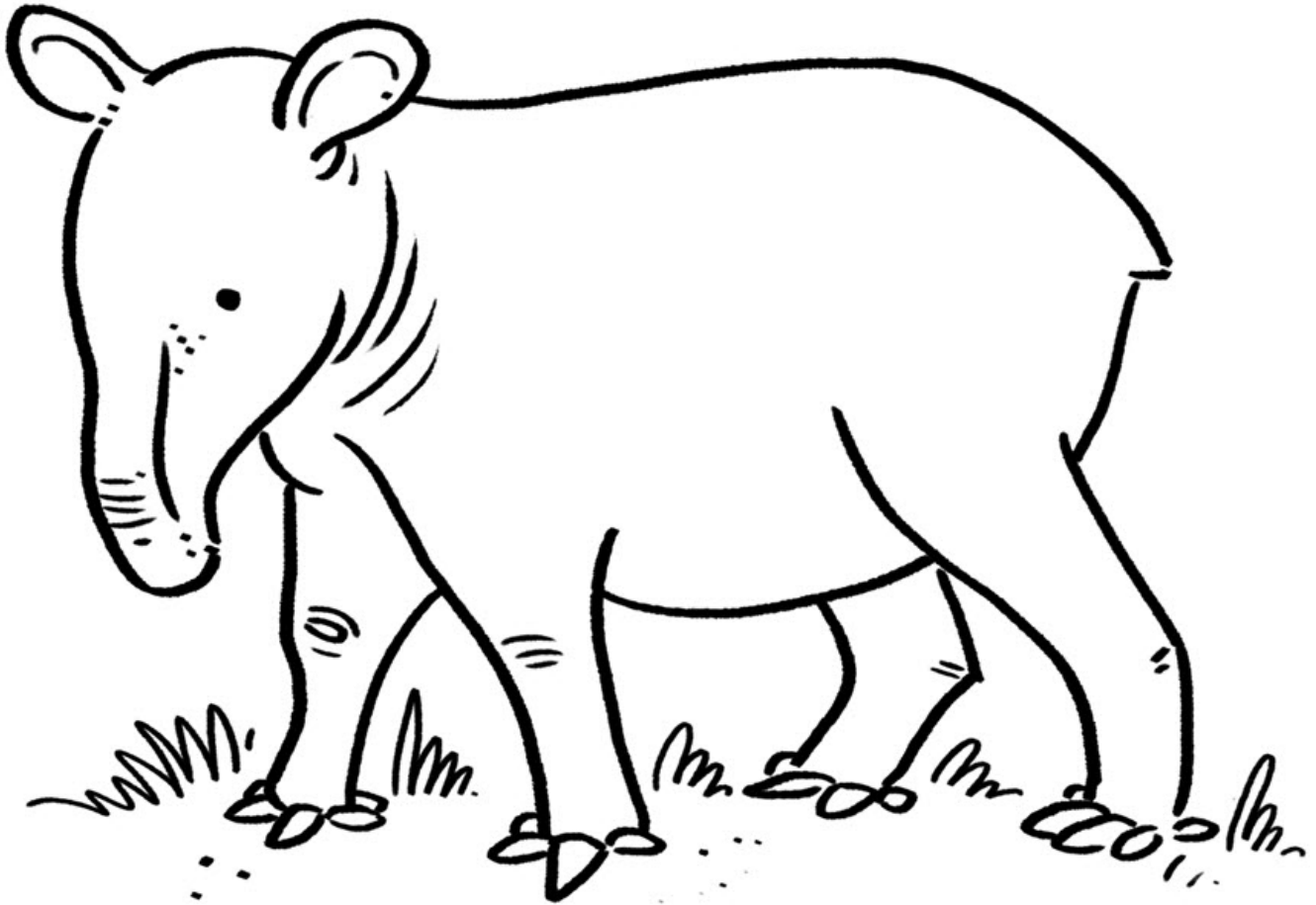
Rainforest Animals

Hummingbird



Rainforest Animals

Tapir



Rainforest Animals

Toucan

